



## 2012 Racing Series Sailing Instructions

Updated May 9<sup>th</sup>, 2012

### 2012 Race Sponsors

Brett Chev Olds	Coast Tire
Dykeman's Hardware Ltd.	Flewelling Construction
Godfrey Associates Ltd.	Hayward & Warwick
Hope Grant Insurance	Irving Oil Limited
Mac Baxter and family	Millidgeville Marine Ltd.
Money Concepts Saint John	Moosehead Breweries Ltd.
New System Laundry & Cleaners	Northeast Yachts
North Sails	Saint John Port Authority
Ship and Shore Cartage Ltd.	TriStar Mercedes

## Table of Contents

PART 1 – GENERAL RULES .....	1
PART 2 – MONDAY NIGHT RACING SERIES .....	10
PART 3 – WEDNESDAY NIGHT RACING SERIES.....	11
PART 4 – THURSDAY NIGHT SINGLE HANDED RACING SERIES .....	12
PART 5 – GRAND BAY SERIES .....	13
PART 6 – ENDURANCE RACE .....	14
PART 7 – CANADA DAY RACE .....	15
PART 8 – ROTHESAY RACE.....	16
PART 9 – HARBOUR RACE .....	17
PART 10 – DIGBY RACE.....	18
PART 11 – SEPTEMBER SERIES .....	19

## PART 1 – GENERAL RULES

### 1 INTRODUCTION

- 1.1 The racing program at the RKYC is intended to offer competitive racing without sacrificing the enjoyment of sailing and the fun of family participation.

The following RKYC races are open to member yachts of other area clubs: Grand Bay Series, Canada Day Race, Harbour Race, Digby Race. The goal of this policy is increased participation in our racing program.

Remember: the RKYC racing program is for all of our members come out and enjoy! The race committee is interested in what you think of the program and wants to hear any suggestions or new ideas that you may have for either this year or next. Please do not hesitate to contact any member of the Racing Committee with your comments or questions.

#### 2012 Race Committee Members:

Chris Herrington (Committee Chair)	Bob Barnes	
John Fitzgerald	Ross Phinney	Terry Reed
David Richards	Gary Sullivan	Dave Weyman

- 1.2 New for 2012:

Penalty after racing: Rule 44.1 is changed to permit a boat that has broken a rule of Part 2 or rule 31 to take a penalty after racing but prior to any protest hearing. Her penalty shall be a scoring penalty as calculated in rule 44.3(c) equal to 40% of the number of entries in her class or 50% of the difference between her finishing position and the number of entries, whichever is less. However, if she caused injury or serious damage or gained a significant advantage in the race or series by her breach, her penalty shall be to retire. The scores of other boats shall not be changed; therefore, two boats may receive the same score.

## 2 RULES

- 2.1 The 2012 Royal Kennebecasis Yacht Club racing series regatta will be governed by the rules as defined in *The Racing Rules of Sailing 2009-2012* including International Sailing Federation (ISAF) and Canadian Yachting Association (CYA) prescriptions.
- 2.2 These Sailing Instructions also act as the Notice of Race.

## 3 ELIGIBILITY AND ENTRY

- 3.1 Races classified as “Closed” are open to boats of RKYC members only. Crew must be members of the RKYC. Guest crew are permitted to participate in a maximum number of three races each year.
- 3.2 In races classified as “Open,” the regatta is open to all boats. Yachts from other clubs are encouraged to attend.
- 3.3 All boats must be a minimum of 20 feet in length.
- 3.4 Visiting boats for open races must report to the race committee prior to the start of the race.

## 4 NOTICES TO COMPETITORS

- 4.1 Notices to competitors will be posted on the official notice board located inside the main doors of the RKYC club house.

## 5 CHANGES TO SAILING INSTRUCTIONS

- 5.1 Any change to the sailing instructions will be posted not less than one hour before the start of the race for races held within the river, and not less than 24 hours prior to the start of the race for races held in the Saint John Harbour or Bay of Fundy.

## 6 SIGNALS MADE ASHORE

- 6.1 Signals made ashore will be displayed on the official notice board.

## 7 SCHEDULE OF RACES

7.1 Scheduled of races: (See Parts 2 through 10 for details)

<u>Race</u>	<u>Eligibility</u>	<u>Date</u>
Pre-Season Social	Open	May 21 @ 7PM
Monday Night Series	Closed	May 28 – September 17, except July 23
Wednesday Night Series	Closed	May 30 – September 19, except July 25
Thursday Night Series	Closed	May 31 – September 20, except July 26
Grand Bay Series Race 1	Open	June 9
Grand Bay Series Race 2	Open	June 10
Endurance Race	Closed	June 16
Canada Day Race	Open	July 1
Harbour Race	Open	September 9
Rothesay Race	Closed	September 8
Digby Race	Open	September 15
September Series Race 1	Closed	September 22
September Series Race 2	Closed	September 23
Finish Line Party	Open	October 20

7.3 Races not sailed may be rescheduled at the discretion of the race committee. Rescheduled races will be announced no later than one day prior to the start of the race.

## 8 THE COURSES

- 8.1 Except for Wednesday Night Series races, the course for each race shall be posted on the official notice board no later than 30 minutes before the start of each scheduled race.
- 8.2 For Wednesday Night Series races, no later than the warning signal for each class the course will be displayed from the committee boat.
- 8.3 All boats should monitor VHF channel 68 prior to, and during the start of each race for any changes to the course or starting procedure.

## 9 MARKS

9.1 Marks shall be as follows:

Buoy	Latitude	Longitude	Description
Buoy F	45° 18.446	66° 06.438	Yellow Finish Line buoy
Buoy S	45° 19.147	66° 06.619	Yellow buoy on Snake Shoal
Buoy #1	45° 18.534	66° 07.206	Yellow buoy near Ragged Point
Buoy #2	45° 18.511	66° 09.005	Yellow buoy near McCormack's Cove
Buoy #3	45° 19.567	66° 06.285	Yellow buoy near McColgans Point
Buoy #4	45° 16.906	66° 08.266	Yellow buoy between SJ Marina and Acamac Point
Buoy #5	45° 19.920	66° 11.213	Green Navigation Buoy at Brandy Point
Buoy #6	45° 18.083	66° 07.888	Yellow Martinon Buoy near Ragged Point Cove
Buoy #7	45° 17.880	66° 10.642	Yellow Martinon Buoy near Belmont Cove
Buoy #8	45° 19.244	66° 09.894	Yellow Martinon Buoy near Lands End
		Whistle Buoy	Saint John Harbour Fairway Buoy identified as "WHIS Mo(A)" on chart 4117.
		Mahogany & Thumb Cap Island	Two islands southwest of Partridge Island, labelled as "Manawagonish Island" and "Thumb Cap Island", on chart 4117. BOTH islands must be rounded
		Partridge Island Bell Buoy	Bell buoy off Partridge Island, labelled "J1" on chart 4117
		Dumping Buoy	Bell buoy southwest of Black Point, labelled "JB" on chart 4117
		Negro Head Buoy	Bell buoy off Barbours Point near Negro Head and is labelled as "JA1" on chart 4117

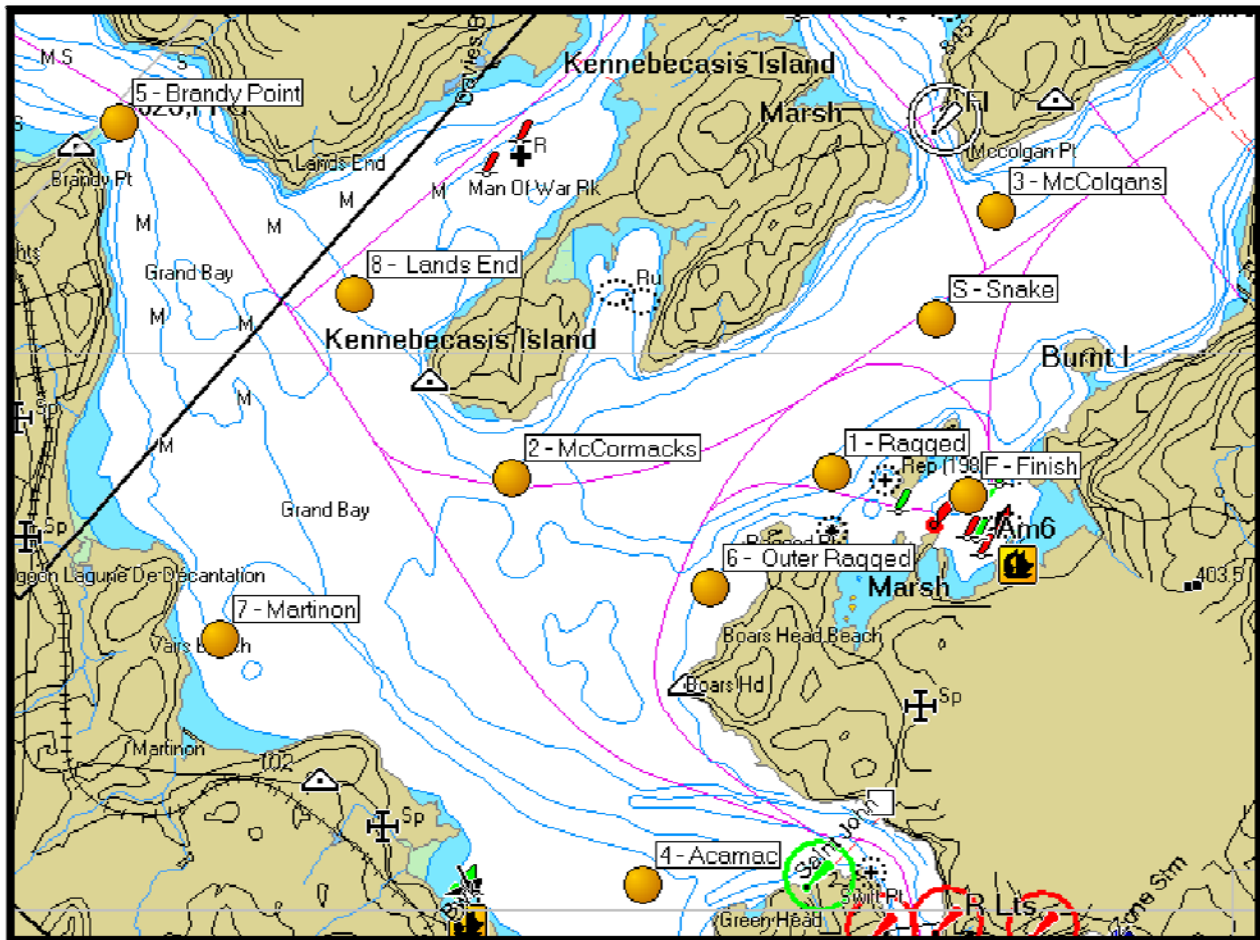
- 9.2 The following table displays the reference leg distances for the 2012 racing season. The sum of leg distances for each race will be used in the time-on-distance corrected time calculations. To find a legs length, find the buoy of the start of the leg in the vertical list, and the buoy at the end of the leg on the horizontal list. The intersection of the row and column will be the leg distance in nautical miles. Example: leg from McColgans (Buoy #3) to McCormacks (Buoy #2) has a distance of 2.19 nm.

Buoy	F	S	#1	#2	#3	#4	#5	#6	#7	#8
	Finish	Snake	Ragged	McCormacks	McColgans	Acamac	Brandy	Outer Ragged	Martinon	Lands End
F	---	0.71 nm	0.55 nm	1.81 nm	1.13 nm	2.42 nm	3.91 nm	1.21 nm	3.06 nm	2.77 nm
S	0.71 nm	---	0.74 nm	1.80 nm	0.48 nm	2.60 nm	3.90 nm	1.39 nm	3.11 nm	2.76 nm
#1	0.55 nm	0.74 nm	---	1.27 nm	1.22 nm	1.87 nm	3.37 nm	0.66 nm	2.51 nm	2.23 nm
#2	1.81 nm	1.80 nm	1.27 nm	---	2.19 nm	1.69 nm	2.10 nm	0.90 nm	1.32 nm	0.96 nm
#3	1.13 nm	0.48 nm	1.22 nm	2.19 nm	---	3.08 nm	4.29 nm	1.87 nm	3.51 nm	3.15 nm
#4	2.42 nm	2.60 nm	1.87 nm	1.69 nm	3.08 nm	---	3.66 nm	1.21 nm	1.94 nm	2.61 nm
#5	3.91 nm	3.90 nm	3.37 nm	2.10 nm	4.29 nm	3.66 nm	---	3.00 nm	2.08 nm	1.15 nm
#6	1.21 nm	1.39 nm	0.66 nm	0.90 nm	1.87 nm	1.21 nm	3.00 nm	---	1.95 nm	1.86 nm
#7	3.06 nm	3.11 nm	2.51 nm	1.32 nm	3.51 nm	1.94 nm	2.08 nm	1.95 nm	---	1.46 nm
#8	2.77 nm	2.76 nm	2.23 nm	0.96 nm	3.15 nm	2.61 nm	1.15 nm	1.86 nm	1.46 nm	---

The distances for legs which are obstructed by land have been determined by travelling between the buoys by boat with a route which was as direct as possible. The travel distances were recorded with a GPS.

## 10 RACING AREA

10.1 The diagram below shows the approximate location of racing areas.



## 11 THE START

- 11.1 The normal starting line will be between the mast of the committee boat and a specified mark. Should an Inside start be specified in the course description, as posted in accordance with sailing instruction 8.1, the line shall be a range from windows on the second floor of the club house through racing buoy 'F'. The outer limit of the starting line will be the Brothers Islands. If a different start line is to be used it will be specified in the course description.
- 11.2 Boats whose warning signal has not been made shall avoid the starting area during the starting sequence for other races.
- 11.3 A boat starting later than five (5) minutes after her starting signal will be scored Did Not Start without a hearing. This changes rules A4 and A5.

## 12 CHANGE OF THE NEXT LEG OF THE COURSE

- 12.1 Boats shall pass between the race committee boat signalling the change of the next leg and the nearby mark. This changes rule 28.1.

## 13 THE FINISH

- 13.1 The normal finishing line will be between the mast of the committee boat and a specified mark. Should an inside finish be specified in the course description, as posted in accordance with sailing instruction 8.1, the finishing line will be between the windows on the second floor of the club house and racing buoy 'F'. If a different finish line is to be used it will be specified in the course description.

## 14 PROTESTS AND REQUESTS FOR REDRESS

- 14.1 Protest forms are available on the RKYC website and may be available from the race committee. Protests and requests for redress or reopening shall be delivered to the race committee within the appropriate time limit.
- 14.2 For each class, the protest time limit is 60 minutes after the last boat has finished the race.
- 14.3 The race committee will notify competitors of hearings in which they are parties or named as witnesses. Hearings will be held in the protest room, located on the second floor of the yacht club unless otherwise stated.
- 14.4 Notices of protests by the race committee will be posted to inform boats under rule 61.1(b).

- 14.5 Rule 44.1 is changed to permit a boat that has broken a rule of Part 2 or rule 31 to take a penalty after racing but prior to any protest hearing. Her penalty shall be a scoring penalty as calculated in rule 44.3(c) equal to 40% of the number of entries in her class or 50% of the difference between her finishing position and the number of entries, whichever is less. However, if she caused injury or serious damage or gained a significant advantage in the race or series by her breach, her penalty shall be to retire. The scores of other boats shall not be changed; therefore, two boats may receive the same score.

## 15 SCORING

- 15.1 For the 2012 season, race results will be calculated using PHRF Time On Distance (TOD).

- 15.2 Season Points shall be calculated as the sum of the following special races, less the yacht's worst Special Race score.

Placing in Grand Bay Series Race 1

Placing in Grand Bay Series Race 2

Placing in Endurance Race

Placing in Canada Day Race

Placing in Harbour Race

Placing in Rothesay Race

Placing in Digby Race

Placing in September Series Race 1

Placing in September Series Race 2

Ranking for the May 30, June 6, 13, 20, 27 & Jul 4 Wednesday Night Races

Ranking for the Jul. 11, 18, Aug. 1, 8 & 15 Wednesday Night Races

Ranking for the Aug. 22, 29, Sep. 5, 12 & 19 Wednesday Night Races

Note: Each of the above races / series is weighted equally and no drops are given within the three Wednesday night racing ranking segments. These Wednesday night racing segments are not used for the scoring of the Wednesday Night Racing Series Trophy.

- 15.3 Refer to Parts 2 through 11 for individual race or series scoring criteria.

## 16 RADIO COMMUNICATION

- 16.1 Except in an emergency, a boat shall neither make radio transmissions while racing nor receive radio communications not available to all boats. This restriction also applies to mobile telephones.

## 17 PRIZES

17.1 Prizes will be awarded at the finish line party on Saturday October 20, 2012.

## 18 SAFETY

18.1 All boats shall have all safety equipment on board as required by Transport Canada. Note the Race Committee may, at its discretion, inspect any or all yachts for compliance with safety equipment requirements.

19.2 Proper running lights must be used after dusk.

19.3 For races not held in the river system (Canada Day Race, Harbour Race, Digby Race), personal flotation devices must be worn from the time of a boats warning signal until the starting signal. It is recommended that personal flotation devices be worn during the entire race.

19.4 For offshore races (Digby race) boats must carry the following additional safety equipment.

- Life raft or tender suitable to hold all persons onboard
- VHF radio with at least channels 12, 16, and 68
- Electronic global positioning system device (GPS) with sufficient battery power
- Adequate auxiliary power & fuel for the yacht to reach the closest harbour
- Charts for all areas of the race

19.5 For offshore races (Digby race) boats may be required to report their GPS location to an on-course race committee safety boat periodically during the race via VHF. Competitors will be advised of any communication requirements prior to the start of the race.

## 19 DISCLAIMER OF LIABILITY

19.1 Competitors participate in the races entirely at their own risk. See *rule 4, Decision to Race*. The organizing authority does not accept any liability for material damage or personal injury or death sustained in conjunction with or prior to, during, or after the race.

## 20 INSURANCE

20.1 Each participating boat shall be insured with valid third-party liability insurance in an amount of not less than \$1,000,000.

## PART 2 – MONDAY NIGHT RACING SERIES

### 1 SCHEDULE OF RACES

- 1.1 The RKYC Monday Night racing series will run every Monday evening starting May 28<sup>th</sup>, 2012 and ending September 17<sup>th</sup>, 2012 except there will be no race on Monday July 23<sup>rd</sup>, 2012. Note this is a “Closed Series.”
- 1.2 The scheduled time of the warning signal for the first race each day is as follows:

Cruising Class A	Not before 1820 hours
Cruising Class B	Not before 1830 hours

Cruising Classes are defined as all sailboats of overall length greater than 20 feet, racing without “Flying” sails. Contact the race committee to determine if you are in cruising class A or B.

### 2 CLASS FLAGS

- 2.1 Class flags will be as follow

Cruising Class A	Code Flag “A”
Cruising Class B	Code Flag “B”

### 3 TIME LIMITS AND TARGET TIMES

- 3.1 If no boat has passed the first mark within 60 minutes of the start, the race will be abandoned.
- 3.2 If no boat has finished the race within 150 minutes of the start, the race will be abandoned.

### 4 SCORING

- 4.1 The low point scoring system will apply for this series.
- 4.2 A boat’s series score will be the total of her race scores excluding her two worst scores.
- 4.3 Eight races are required to be completed to constitute a series.
- 4.4 Should a boat and/or its crew choose to race in a non RKYC racing event, the boat shall be awarded as the average of her race scores up until the date of the event. This may be awarded for a maximum of two (2) races per year. Boats must apply to the race committee for scoring compensation. The number of races a boat receives scoring compensation for will be at the discretion of the race committee.

## **PART 3 – WEDNESDAY NIGHT RACING SERIES**

### **1 SCHEDULE OF RACES**

- 1.1 The RKYC Wednesday Night racing series will run every Wednesday evening starting May 30<sup>th</sup>, 2012 and ending September 19<sup>th</sup>, 2012 except there will be no race on Wednesday July 25<sup>th</sup>, 2012. Note this is a “Closed Series.”
- 1.2 The scheduled time of the warning signal for the first class shall not be before 1820 hours. Racing Classes are defined as all sailboats of overall length greater than 20 feet, racing with “Flying” sails (spinnakers, etc.).

### **2 CLASS FLAGS**

- 2.1 Class flags will be as follow  
Racing Class A                      Code Flag “A”

### **3 TIME LIMITS AND TARGET TIMES**

- 3.1 If no boat has passed the first mark within 60 minutes of the start, the race will be abandoned.
- 3.2 If no boat has finished the race within 150 minutes of the start, the race will be abandoned.

### **4 SCORING**

- 4.1 The low point scoring system will apply for this series.
- 4.2 A boat’s series score will be the total of her race scores excluding her two worst scores.
- 4.3 Eight races are required to be completed to constitute a series.
- 4.4 Prior to the start of the racing season, each boat must complete “The Performance Handicap Racing Fleet of RKYC” information form available on the RKYC website and submit it to the race committee.
- 4.5 Should a boat and/or its crew choose to race in a non RKYC racing event, the boat shall be awarded as the average of her race scores up until the date of the event. This may be awarded for a maximum of two (2) races per year. Boats must apply to the race committee for scoring compensation. The number of races a boat receives scoring compensation for will be at the discretion of the race committee.

## PART 4 – THURSDAY NIGHT SINGLE HANDED RACING SERIES

### 1 SCHEDULE OF RACES

- 1.1 The RKYC Thursday Night racing series will run, weather dependent, Thursday evenings in the period between May 31<sup>st</sup>, 2012 and September 13<sup>th</sup>, 2012 except there will be no race on Thursday July 26<sup>th</sup>, 2012. A maximum of 10 races will be run in this time period. Note this is a “Closed Series.”
- 1.2 The scheduled time of the warning signal for the first class shall not be before 1830 hours. Boats shall be sailboats of overall length greater than 20 feet, racing without “Flying” sails.

### 2 CLASS FLAGS

- 2.1 Class flags will be as follow  
Class A                      Code Flag “A”

### 3 TIME LIMITS AND TARGET TIMES

- 3.1 If no boat has passed the first mark within 60 minutes of the start, the race will be abandoned.
- 3.2 If no boat has finished the race within 150 minutes of the start, the race will be abandoned.

### 4 SCORING

- 4.1 The low point scoring system will apply for this series.
- 4.2 A boat’s series score will be the total of her race scores excluding her two worst scores.
- 4.3 Eight races are required to be completed to constitute a series.
- 4.4 Should a boat and/or its crew choose to race in a non RKYC racing event, the boat shall be awarded as the average of her race scores up until the date of the event. This may be awarded for a maximum of two (2) races per year. Boats must apply to the race committee for scoring compensation. The number of races a boat receives scoring compensation for will be at the discretion of the race committee.

### 5 SPECIAL RULES

- 5.1 Only one person is permitted to be aboard each boat while racing.
- 5.2 The automatic function of Electronic auto pilots are not permitted to be used while a boat is racing. Auto pilots may be used as a method to lock a steering mechanism in place.

## PART 5 – GRAND BAY SERIES

### 1 SCHEDULE OF RACES

- 1.1 The RKYC Grand Bay Series will be held Saturday June 9<sup>th</sup>, 2012 and Sunday June 10<sup>th</sup>, 2012. Note this is an “Open Series.”
- 1.2 The scheduled time of the warning signal for the first race each day is as follows
- |                      |                       |
|----------------------|-----------------------|
| Racing Class A       | Not before 1325 hours |
| Racing Class B       | Not before 1315 hours |
| Cruising Class A & B | Not before 1300 hours |

Racing Classes are defined as all sailboats of overall length greater than 20 feet, racing with “Flying” sails (spinnakers, etc.). Contact the race committee to determine if you are in class A or B. Cruising Class is defined as all sailboats of overall length greater than 20 feet, racing without “Flying” sails.

### 2 CLASS FLAGS

- 2.1 Class flags will be as follow
- |                      |               |
|----------------------|---------------|
| Racing Class A       | Code Flag “A” |
| Racing Class B       | Code Flag “B” |
| Cruising Class A & B | Code Flag “C” |

### 3 TIME LIMITS AND TARGET TIMES

- 3.1 If no boat has passed Mark 1 within 90 minutes of the start, the race will be abandoned.
- 3.2 If no boat has finished the race within 4 hours of the start, the race will be abandoned.
- 3.3 Boats failing to finish within 120 minutes after the first boat, of her class, sails the course and finishes will be scored Did Not Finish without a hearing. This changes rules 35, A4 and A5.

### 4 SCORING

- 4.1 The low point scoring system will apply for the series.
- 4.2 A boat’s series score will be the total of her race scores.
- 4.3 One race is required to be completed to constitute a series.

## PART 6 – ENDURANCE RACE

### 1 SCHEDULE OF RACES

- 1.1 The RKYC Endurance Race will be held Saturday June 16<sup>th</sup>, 2012. Note this is a “Closed Race.”
- 1.2 The scheduled time of the warning signal is as follows
- |                      |                       |
|----------------------|-----------------------|
| Racing Class A       | Not before 1125 hours |
| Racing Class B       | Not before 1115 hours |
| Cruising Class A & B | Not before 1100 hours |

Racing Classes are defined as all sailboats of overall length greater than 20 feet, racing with “Flying” sails (spinnakers, etc.). Contact the race committee to determine if you are in class A or B. Cruising Class is defined as all sailboats of overall length greater than 20 feet, racing without “Flying” sails.

### 2 CLASS FLAGS

- 2.1 Class flags will be as follow
- |                      |               |
|----------------------|---------------|
| Racing Class A       | Code Flag “A” |
| Racing Class B       | Code Flag “B” |
| Cruising Class A & B | Code Flag “C” |

### 3 THE FINISH

- 3.1 Each yacht is responsible to record their finishing time using standard GPS time and report the finish time to the race committee (Note: Elapsed time is not acceptable). Each yacht should also attempt to radio the race committee on VHF channel 68 when finished.

### 4 TIME LIMITS AND TARGET TIMES

- 4.1 If no boat has finished the race within 24 hours of the start, the race will be abandoned.
- 4.2 Boats failing to finish within 12 hours after the first boat of her class sails the course and finishes will be scored Did Not Finish without a hearing. This changes rules 35, A4 and A5.

### 5 SCORING

- 5.1 The low point scoring system will apply for this race.

## PART 7 – CANADA DAY RACE

### 1 SCHEDULE OF RACES

- 1.1 The RKYC Canada Day Race will be held Sunday July 1<sup>st</sup>, 2012. Note this is an “Open Race.” Conditions permitting this race will be held in the Saint John Harbour.
- 1.2 The scheduled time of the warning signal for the first class shall not be before 1300 hours.

#### Estimated Reversing Falls Slack Tides

Sunday	0740 hours, 1225 hours, 2000 hours
Monday	0050 hours, 0840 hours, 1325 hours, 2100 hours

Racing Classes are defined as all sailboats of overall length greater than 20 feet, racing with “Flying” sails (spinnakers, etc.). Contact the race committee to determine if you are in class A or B. Cruising Class is defined as all sailboats of overall length greater than 20 feet, racing without “Flying” sails.

### 2 CLASS FLAGS

- 2.1 Class flags will be as follow
 

Racing Class A	Code Flag “A”
Racing Class B	Code Flag “B”
Cruising Class A & B	Code Flag “C”

### 3 TIME LIMITS AND TARGET TIMES

- 3.1 If no boat has passed Mark 1 within 90 minutes of the start, the race will be abandoned.
- 3.2 If no boat has finished the race within 4 hours of the start, the race will be abandoned.
- 3.3 Boats failing to finish within 2 hours after the first boat, of her class, sails the course and finishes will be scored Did Not Finish without a hearing. This changes rules 35, A4 and A5.

### 4 SCORING

- 4.1 The low point scoring system will apply for this race.

## PART 8 – ROTHESAY RACE

### 1 SCHEDULE OF RACES

- 1.1 The RKYC Rothesay Race will be held Saturday September 8<sup>th</sup>, 2012. Note this is a “Closed Race.”
  
- 1.2 The scheduled time of the warning signal is as follows

Racing Class A	Not before 1325 hours
Racing Class B	Not before 1315 hours
Cruising Class A & B	Not before 1300 hours

Racing Classes are defined as all sailboats of overall length greater than 20 feet, racing with “Flying” sails (spinnakers, etc.). Contact the race committee to determine if you are in class A or B. Cruising Class is defined as all sailboats of overall length greater than 20 feet, racing without “Flying” sails.

### 2 CLASS FLAGS

- 2.1 Class flags will be as follow

Racing Class A	Code Flag “A”
Racing Class B	Code Flag “B”
Cruising Class A & B	Code Flag “C”

### 3 TIME LIMITS AND TARGET TIMES

- 3.1 If no boat has finished the race within 8 hours of the start, the race will be abandoned.

### 4 SCORING

- 4.1 The low point scoring system will apply for this race.

## PART 9 – HARBOUR RACE

### 1 SCHEDULE OF RACES

- 1.1 The RKYC Harbour Race will be held Sunday September 9<sup>th</sup>, 2012. Note this is an “Open Race.”
- 1.2 The scheduled time of the warning signal is as follows
- |                      |                       |
|----------------------|-----------------------|
| Racing Class A & B   | Not before 1200 hours |
| Cruising Class A & B | Not before 1200 hours |

#### Estimated Reversing Falls Slack Tides

Saturday	0330 hours, 0815 hours, 1550 hours, 2040 hours
Sunday	0425 hours, 0910 hours, 1645 hours, 2135 hours

Racing Classes are defined as all sailboats of overall length greater than 20 feet, racing with “Flying” sails (spinnakers, etc.). Contact the race committee to determine if you are in Racing class A or B. Cruising Class is defined as all sailboats of overall length greater than 20 feet, racing without “Flying” sails.

### 2 CLASS FLAGS

- 2.1 Class flags will be as follow
- |                      |               |
|----------------------|---------------|
| Racing Class A       | Code Flag “A” |
| Racing Class B       | Code Flag “B” |
| Cruising Class A & B | Code Flag “C” |

### 3 TIME LIMITS AND TARGET TIMES

- 3.1 If no boat has passed Mark 1 within 3 hours of the start, the race will be abandoned.
- 3.2 If no boat has finished the race within 6 hours of the start, the race will be abandoned.
- 3.3 Boats failing to finish within 2 hours after the first boat sails the course and finishes will be scored Did Not Finish without a hearing. This changes rules 35, A4 and A5.

### 4 SCORING

- 4.1 The low point scoring system will apply for this race.

## PART 10 – DIGBY RACE

### 1 SCHEDULE OF RACES

- 1.1 The RKYC Digby Race will be held Saturday September 15<sup>th</sup>, 2012. Note this is an “Open Race.” You must register with the race committee no later than September 13<sup>th</sup>, 2012 if you intend to compete in this race.
- 1.2 The scheduled time of the warning signal for all classes shall not be before 1000 hours. Note there will be a common start for all classes. The class flag for the common start shall be Code Flag “A.”

Estimated Reversing Falls Slack Tides

Friday	0105 hours, 0845 hours, 1330 hours, 2105 hours
Saturday	0150 hours, 0930 hours, 1410 hours, 2150 hours
Sunday	0230 hours, 1010 hours, 1450 hours, 2230 hours

### 2 THE FINISH

- 2.1 The finish line for this race shall be latitude 44° 42.600N. The western end of the line is longitude 65° 48.000W. You have finished when your GPS indicates you have reached the above latitude to the east of the indicated end of the line. Each yacht is responsible to record their finishing time using standard GPS time, and should also attempt to radio the race committee on VHF channel 68.

### 3 TIME LIMITS AND TARGET TIMES

- 3.1 Boats failing to finish within 11 hours of the start will be scored Did Not Finish without a hearing. This changes rules 35, A4 and A5.

### 4 SCORING

- 4.1 The low point scoring system will apply for this race.

### 5 SAFETY

- 5.1 All boats shall have all safety equipment on board as required by Transport Canada. Note the Race Committee may, at its discretion, inspect any or all yachts for compliance with safety equipment requirements.
- 5.2 Personal flotation devices must be worn from the time of a boats preparatory signal until the starting signal. It is recommended that personal flotation devices be worn during the entire race.
- 5.3 All racing yachts must carry the following additional safety equipment.
  1. Life raft or tender suitable to hold all persons onboard
  2. VHF radio with at least channels 12, 16, and 68
  3. Electronic global positioning system device (GPS) with sufficient battery power
  4. Adequate auxiliary power & fuel for the yacht to reach the closest harbour
  5. Charts for all areas of the race
  6. Lifelines
- 5.4 Yachts may be required to report their GPS location to an on-course race committee safety boat periodically during the race via VHF. Competitors will be advised of any communication requirements prior to the start of the race.

## PART 11 – SEPTEMBER SERIES

### 1 SCHEDULE OF RACES

- 1.1 The RKYC September Series will be held Saturday September 22<sup>nd</sup>, 2012 and Sunday September 23<sup>rd</sup>, 2012. Note this is a “Closed Series.”
- 1.2 The scheduled time of the warning signal for the first race each day is as follows

Racing Class A	Not before 1325 hours
Racing Class B	Not before 1315 hours
Cruising Class A & B	Not before 1300 hours

Racing Classes are defined as all sailboats of overall length greater than 20 feet, racing with “Flying” sails (spinnakers, etc.). Contact the race committee to determine if you are in class A or B. Cruising Class is defined as all sailboats of overall length greater than 20 feet, racing without “Flying” sails.

### 2 CLASS FLAGS

- 2.1 Class flags will be as follow

Racing Class A	Code Flag “A”
Racing Class B	Code Flag “B”
Cruising Class A & B	Code Flag “C”

### 3 TIME LIMITS AND TARGET TIMES

- 3.1 If no boat has passed Mark 1 within 90 minutes of the start, the race will be abandoned.
- 3.2 If no boat has finished the race within 6 hour of the start, the race will be abandoned.

### 4 SCORING

- 4.1 The low point scoring system will apply for the series.
- 4.2 A boat’s series score will be the total of her race scores.
- 4.3 One race is required to be completed to constitute a series.